

COMMENT

Promoting knowledge to improve workplace safety, health and wellbeing



Northern Ireland
Safety Group

Promoting Occupational
Safety & Health

Managing the risk of COVID-19 in construction - *The New Norm.....?*



Alastair Lambe, Group SHEQ Director, McLaughlin & Harvey has recently been involved in a webinar run by the [Property Sports Network](#) on the practical steps his company are taking to implement social distancing onsite.

In the following pages you'll see the actions taken by McLaughlin & Harvey (in image form) to ensure a location is implementing social distancing and managing the health and wellbeing of employees and others onsite.

Comment would like to thank McLaughlin & Harvey for granting us permission to share this article.



Disclaimer

NI Safety Group and the McLaughlin & Harvey do not accept any liability whatsoever for the contents (including attachments), usage or onward transmission including any loss or damage howsoever arising out of the use or reliance on its contents. In providing this information NI Safety Group and the author/s are not acting in an advisory capacity or as health and safety consultants and it remains your responsibility to ensure that you are meeting your legal obligations.

Nothing in the material provided constitutes legal or professional advice.

The material provided is protected by copyright. It may not be copied, reproduced, republished, downloaded, posted, broadcast or transmitted in any way except for your own personal, non-commercial use. Prior written consent of NI Safety Group and the author must be obtained for any other use of material.

info@nisc.org.uk

nisc.org.uk

Health and Wellbeing in Construction

Managing the Risk of COVID-19



About me....



Alastair
Lambe

Group SHEQ
Director

McLaughlin & Harvey

- ▶ Background
- ▶ SHEQ Department – 21 Team Members
- ▶ Responsible for the SHEQ Strategy
- ▶ Group Management Systems & Certifications

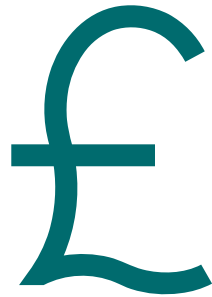
Company Overview

165 years old



774

directly employed staff



£513m turnover

APPROVED
SUPPLY
CHAIN
DATABASE
OF >8,000

ISO 45001
ISO 9001
ISO 14001
ISO 50001
ISO 27001

Family run business



Offices

Belfast | London
Bristol | Liverpool
Glasgow | Edinburgh

Prior to Lockdown.....

46 projects (26 in England, 16 in Scotland & 4 in NI)

Positive tender opportunities

Strong health & safety culture

Engaged workforce

Exciting initiatives

Focusing on Health & Wellbeing

Challenges, Past, Present & Future

Ever changing environment

Varying approach in England, Scotland, Wales & NI

Industry advice

Effective communication

Employee confidence

Employee wellbeing

Supply Chain engagement & education

PPE

Compliance

The New Norm.....?

- ▶ Health & Safety - *“well & truly on the agenda”*
 - ▶ Safer systems of work
 - ▶ Spotlight on Health & Mental Health
 - ▶ AIR
 - ▶ Opportunities
- ▶ Fundamental change
 - ▶ Social Distancing
 - ▶ Enhanced welfare facilities
 - ▶ Work planning
 - ▶ Reduced rotation
 - ▶ Improved efficiency??
- ▶ Home Working



IMS Doc Ref No:	PO/2/3/2/6-3376 (2)
Process Objective:	To outline and clarify the measures to be implemented to allow the safe recommencement and continuation of site operations to protect the workforce from COVID-19
Process Owner:	Group SHEQ Director

COVID-19 Site Specific Safe Operating Procedure (England & NI Projects)



Project Name:	Liverpool FC Training Ground	Contract Number:	50096
Project/Site Manager:	Alan Howatson	Site Address:	Simonswood Lane, Kirkby
Operations/Contract Manager:	Robbie Clark	Postcode:	L33 5XB

Revision Schedule			
Revision No	Date	Comments	Author
0	8/4/20		AH
1	15/4/20	Minor updates in line with Construction Leadership Council advice	AH
2	27/4/20	Updated compound setup and one way system, updated resource figures	DD
3	28/4/20	Minor updates to photos and text, update of resources	AH

- ▶ Introduction
- ▶ Travelling to Site
- ▶ Site Access/Egress
- ▶ Hand Washing & Toilet Facilities
- ▶ Canteen, Eating & Smoking Arrangements
- ▶ Changing Facilities and Drying Rooms
- ▶ Cleaning
- ▶ Procedure if Someone Falls ill
- ▶ Self-Isolation
- ▶ Avoid Close Working
- ▶ Risk Assessments
- ▶ Site Meetings / Daily Briefings / Point of Work Risk Assessments / Toolbox Talks
- ▶ Delivery Management
- ▶ Additional Site Arrangements
- ▶ Accident & Emergency Arrangements
- ▶ Site Layout Plan (Showing Segregation)





**STRICT COVID-19
SITE OPERATING
PROCEDURES
IN FORCE.**

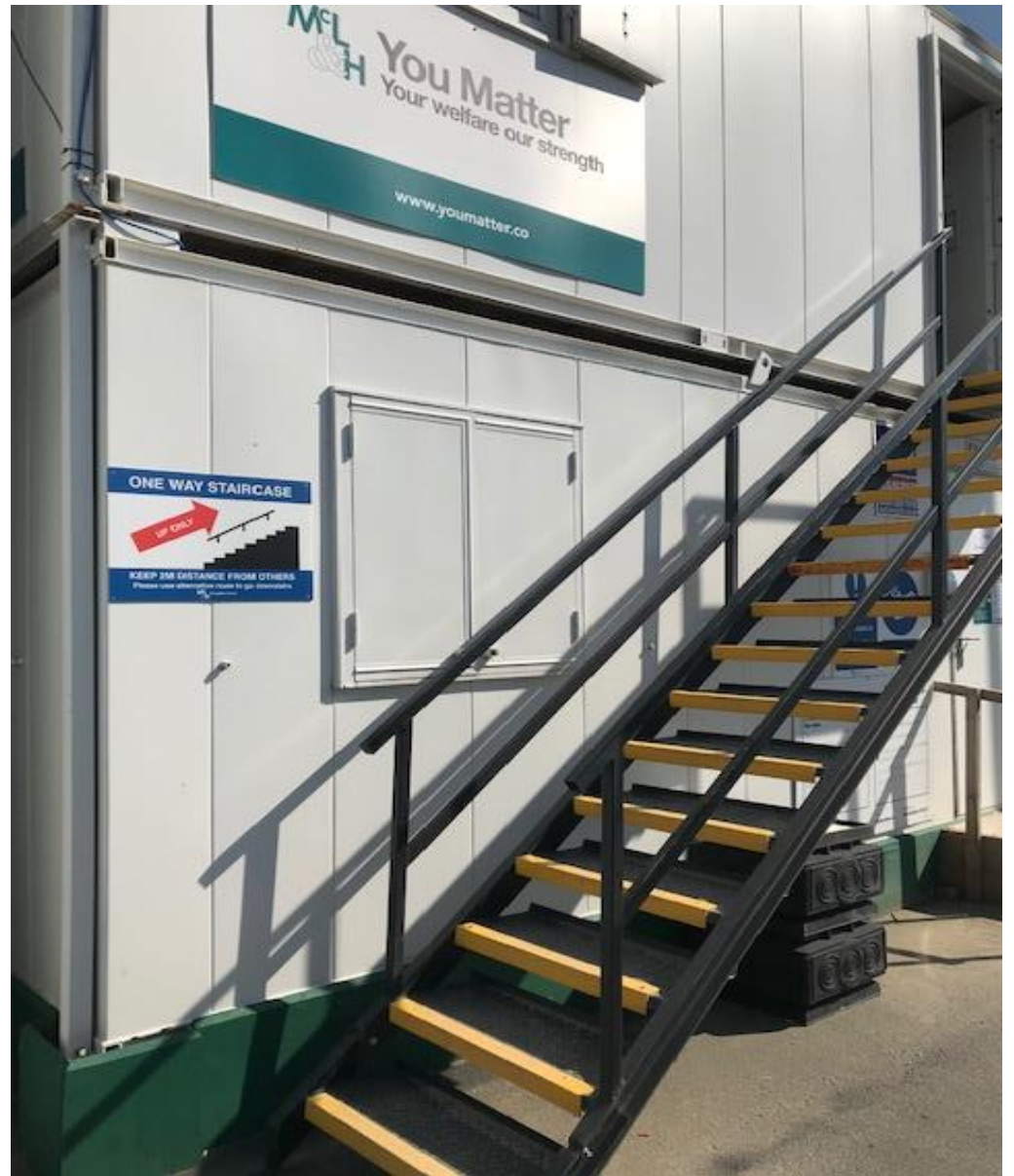
**FAILURE TO COMPLY
WILL RESULT IN
REMOVAL FROM SITE.**

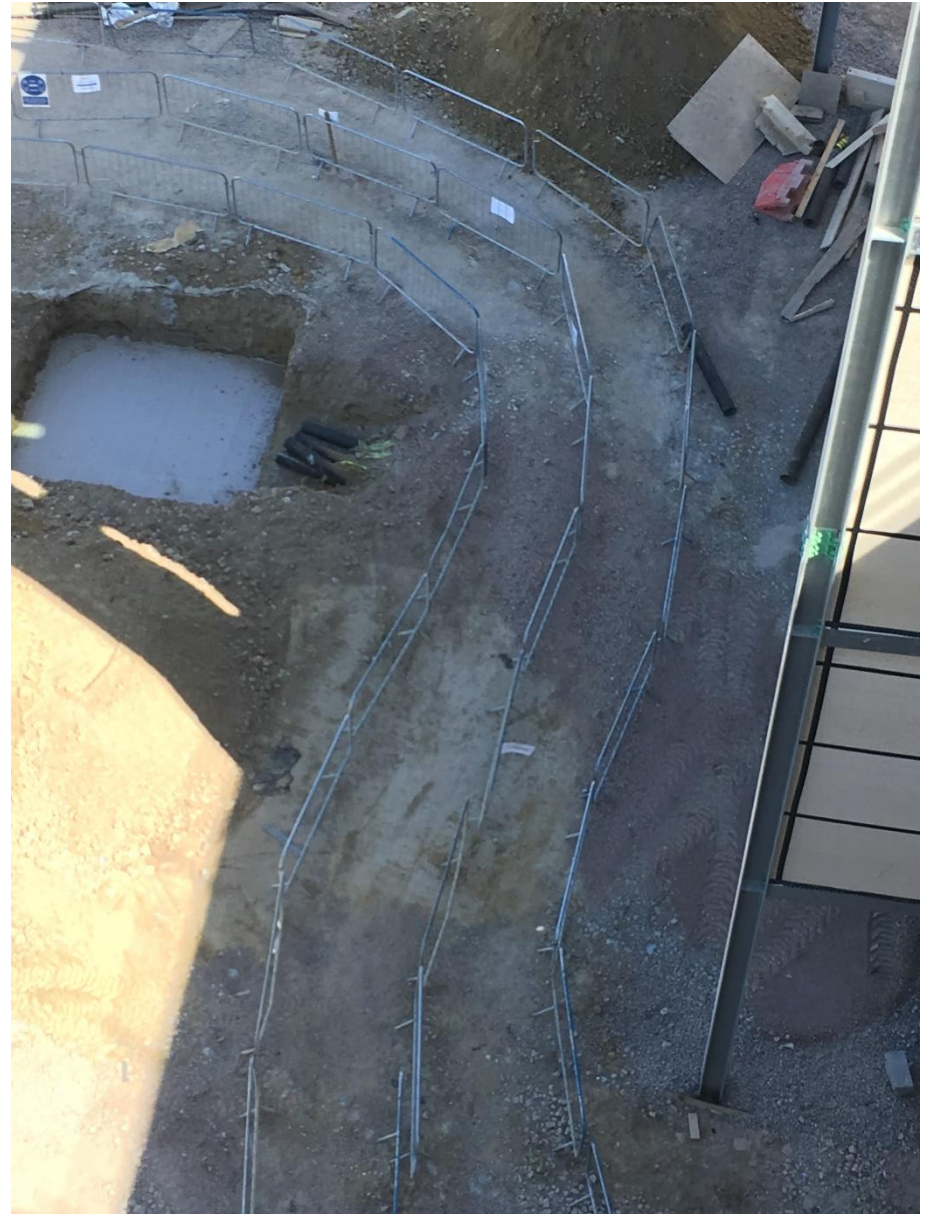


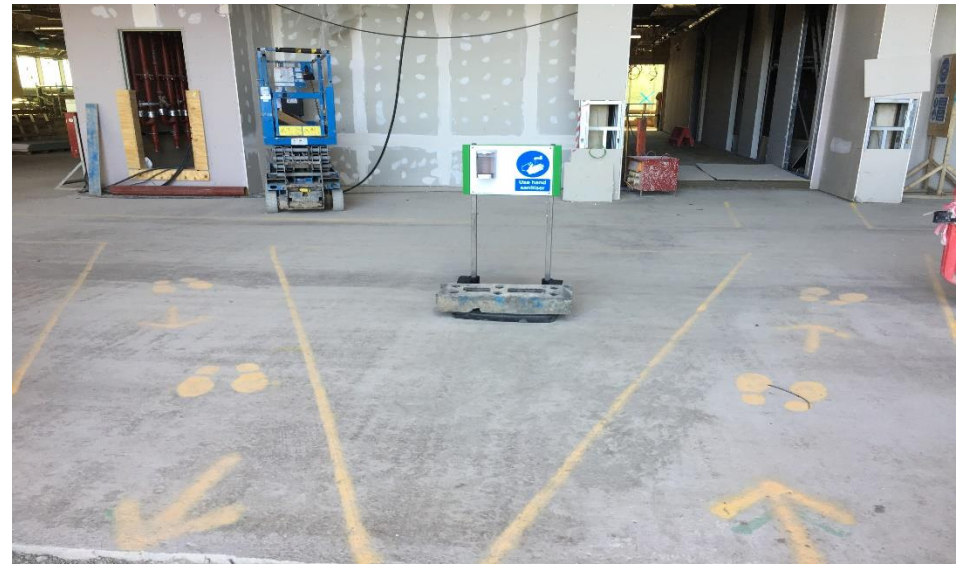
- Complete Covid-19 self declaration on first arrival at site
- Observe site social distancing – stay 2m apart
- 'Permits to Work' for works in close proximity must be authorised by Project Manager
- Protect yourself and others, wash and sanitise hands regularly
- Disinfect all vehicle surfaces regularly
- Adhere to site one-way systems
- Briefings / meetings to take place outdoors
- Wear correct PPE at all times
- If presenting symptoms, inform your supervisor immediately
- Report concerns & non-compliance



You Matter
Your welfare our strength

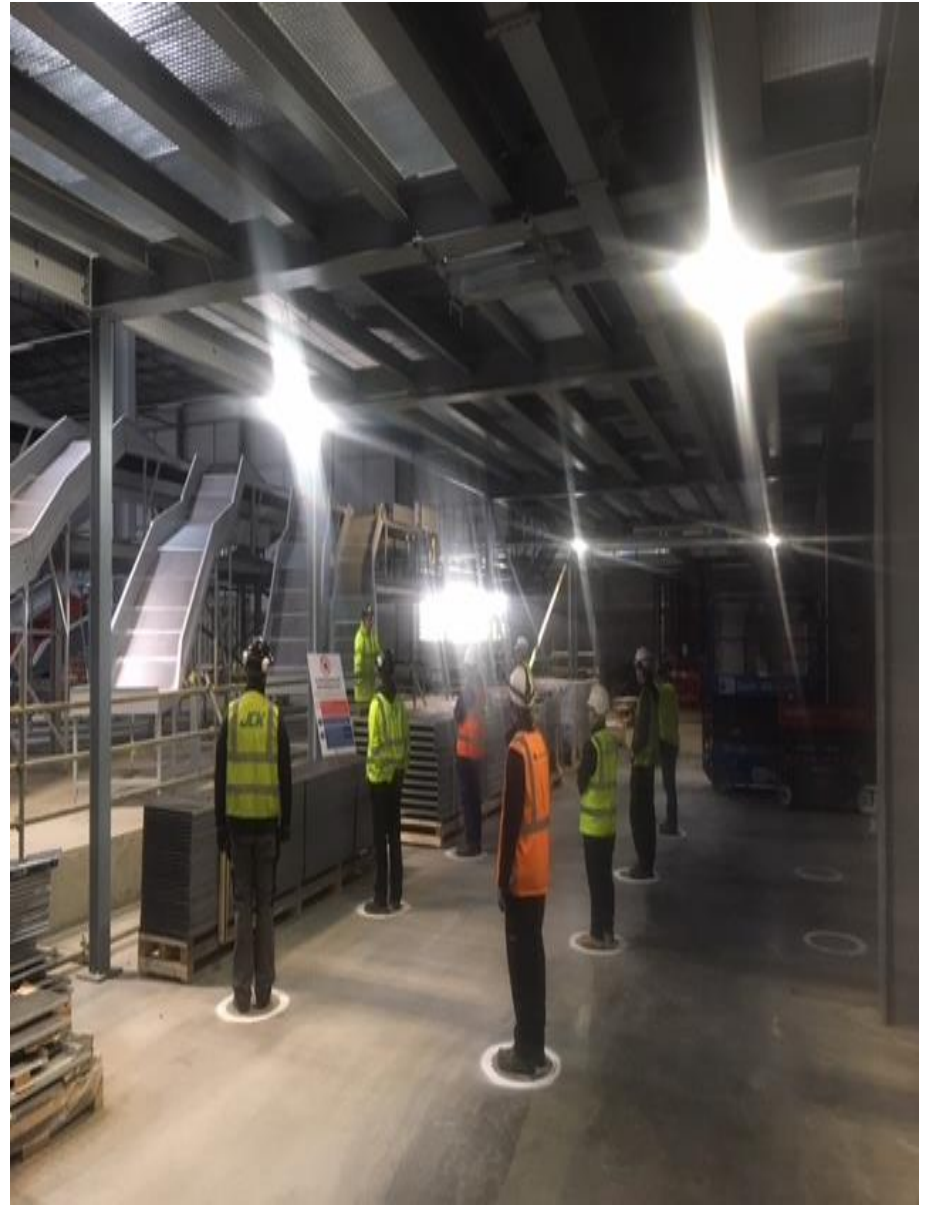














What to look for.....

- ▶ Advanced Visitor Information
- ▶ COVID Secure Sign
- ▶ Self Declaration
- ▶ Hygiene Requirements
- ▶ Social Distancing

Staying Covid-19 Secure in 2020

We confirm we have complied with the governments guidance on managing the risk of COVID-19

FIVE STEPS TO SAFER WORKING TOGETHER

- ✓ We have carried out a **COVID-19 risk assessment** and shared the results with the people who work here
- ✓ We have **cleaning, handwashing and hygiene procedures** in line with the guidance
- ✓ We have taken all reasonable steps to **help people work from home**
- ✓ We have taken all reasonable steps to **maintain a 2m distance** in the workplace
- ✓ Where people cannot be 2m apart, we have done everything practical **manage transmission risk**

Employer _____ Date _____


Who to contact: _____
(or the Health and Safety Executive at www.hse.gov.uk or 0300 003 1647)

Further Info & Useful Links

HM Government

Working safely during COVID-19 in construction and other outdoor work

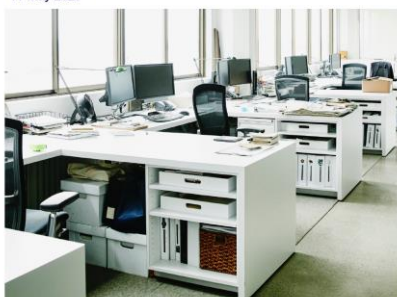
Guidance for employers, employees and the self-employed
11 May 2020



HM Government

Working safely during COVID-19 in offices and contact centres

Guidance for employers, employees and the self-employed
11 May 2020



Version 4 – 18 May 2020

Construction Leadership Council

Construction Sector - Site Operating Procedures Protecting Your Workforce During Coronavirus (Covid-19)

Contents	
Introduction	1
When to Travel to Work	2
Travel to Work	2
Driving at Work	3
Site Access and Egress Points	3
Hand Washing	3
Toilet Facilities	4
Canteens and Rest Areas	4
Changing Facilities, Showers and Drying Rooms	4
Work Planning to Avoid Close Working	5
First Aid and Emergency Service Response	6
Cleaning	6

Introduction
These are exceptional circumstances and the industry must comply with the latest Government advice on Coronavirus (Covid-19) at all times.
These Site Operating Procedures (SOP) are based on Government guidance on [Working safely during coronavirus \(Covid-19\) - Construction and other outdoor work](#); other restrictions and advice may apply in [Scotland, Wales and Northern Ireland](#).
Where workers enter people's homes, they should follow the Government guidance on [Working in Other People's Homes](#).
The HSE is the relevant enforcing authority for occupational health and safety legislation and guidance to control public health risks in the construction sector. If a site is not consistently implementing the measures set out by the Government, it may be subject to enforcement action.
Construction sites operating during the Coronavirus (Covid-19) pandemic need to ensure they are protecting their workforce and minimising the risk of spread of infection. This includes considering how personnel travel to and from site.
This guidance is intended to introduce consistent measures on construction sites of all types and sizes in line with the Government's recommendations on social distancing and ensure employers and individuals make every effort to comply.
Government guidance for employers in England states "where the social distancing guidelines cannot be followed in full in relation to a particular activity, businesses should consider whether that activity needs to continue for the business to continue to operate, and, if so, take all the mitigating actions possible to reduce the risk of transmission between staff".
The health and safety requirements of any construction activity must not be compromised at this time. If an activity cannot be undertaken safely, it should not take place.
Emergency services are also under great pressure and may not be able to respond as quickly as usual. This should be taken into consideration in the planning of work activities, first aid, fire and emergency responses.
Organisations must have in place effective arrangements for monitoring and reviewing their compliance with Government and industry guidance. Sites should also remind the workforce at every opportunity of the Site Operating Procedures which are aimed at protecting them, their colleagues, families and the UK population.

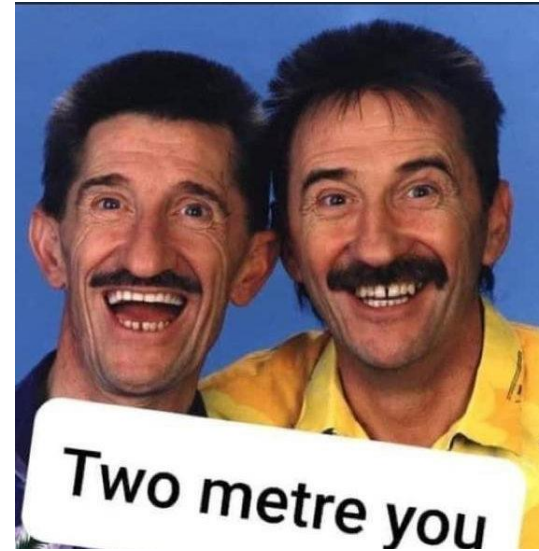
▶ www.gov.uk/coronavirus

▶ www.hse.gov.uk

▶ www.constructionleadershipcouncil.co.uk

Final Thought.....

“Its not all negative”





www.mclh.co.uk



Thank you

Alastair Lambe
Group SHEQ Director
02890 342777